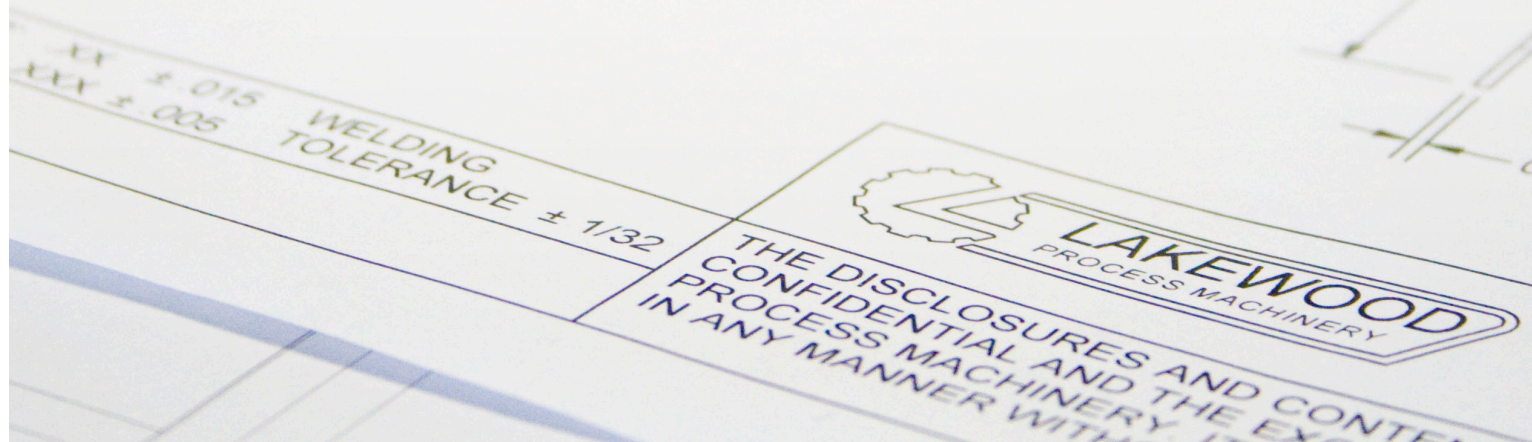




**A Guide To
Lakewood Process Machinery
Volumetric Fresh Pack Lines**





Step 1: Determining the volume of product you plan on running

Typically we like to make sure that the equipment you purchase from Lakewood Process Machinery will allow for some growth in the future to ensure that you will be covered for a higher yield of fruit.

Step 2: Deciding what you ultimately want to achieve with your fresh line

Lakewood offers a plethora of options when it comes to fresh packing equipment. To get the most out of this guide it would be advantageous to have some knowledge as to what you would like to accomplish with your fresh line before continuing on. Do you want a small, simple set-up that will get you filling slightly faster than filling cups by hand, or do you want a fully integrated complete cleaning, destemming, sizing, automated filling line? We have both of those options and everything in between, so your options are vast.

Step 3: Determining your space restrictions

Whether you are building a new packing shed with no determined space constraints, or attempting to fit a new line into a small existing space, Lakewood has you covered. Our 'standard' line layout dimensions (approximate) are listed underneath each line to give you a better idea of how much space you may need in order to fit the listed equipment into your facility.

Using This Guide

(Volume line is capable of)

(Name of Fresh Packing Line) (Page #)
(Equipment included in this line)

Apprx. Dimensions = (line dimensions with no sorters) / 1 Sorter = (dimensions with 1 sorters in-line) / 2 Sorters = (dimensions with 2 sorters in-line)



4500 lbs per hour or less

Basic Econo-Pack Line A1
Flat Inspection / Sizer and Manual Push-Thru Filler
Apprx. Dimensions = 18' x 5'

Econo-Pack Line for Pints A2
Flat Inspection / Sizer and Automated Pint Filling with Pack Table
Apprx. Dimensions = 18' x 19'

Econo-Pack Adjustable Line A3
Flat Inspection / Sizer and Automated Adjustable Filling with Pack Table
Apprx. Dimensions = 19' x 20'

Up to 6000 lbs per hour (for pints)

Basic T Volumetric Line for Pints B1
Air Cleaner, Inspection, Automated Pint Filling with Pack Table
Apprx. Dimensions = 33' x 19' / 1 Sorter = 38' x 19' / 2 Sorters = 46' x 19'

Basic T Volumetric EXT Line for Pints B2
Air Cleaner, Extended Inspection, Automated Pint Filling with Pack Table
Apprx. Dimensions = 36' x 19' / 1 Sorter = 41' x 19' / 2 Sorters = 49' x 14'

Basic Straight Volumetric Line for Pints B3
Air Cleaner, Inspection, Transfer Conveyor, Automated Pint Filling with Pack Table
Apprx. Dimensions = 38' x 14' / 1 Sorter = 43' x 14' / 2 Sorters = 51' x 14'

Basic Straight Volumetric EXT Line for Pints B4
Air Cleaner, Extended Inspection, Transfer Conveyor, Automated Pint Filling with Pack Table
Apprx. Dimensions = 42' x 14' / 1 Sorter = 47' x 14' / 2 Sorters = 55' x 14'



8000 lbs per hour or less

Basic T Volumetric Adjustable Line C1

Air Cleaner, Inspection, Automated Adjustable Filling with Pack Table

Apprx. Dimensions = 34' x 30' / 1 Sorter = 39' x 30' / 2 Sorters = 47' x 30'

Basic T Volumetric Adjustable EXT Line C2

Air Cleaner, Extended Inspection, Automated Adjustable Filling with Pack Table

Apprx. Dimensions = 37' x 30' / 1 Sorter = 42' x 30' / 2 Sorters = 50' x 30'

Basic Straight Volumetric Adjustable Line C3

Air Cleaner, Inspection, Transfer Conveyor, Automated Adjustable Filling with Pack Table

Apprx. Dimensions = 50' x 14' / 1 Sorter = 55' x 14' / 2 Sorters = 63' x 14'

Basic Straight Volumetric Adjustable EXT Line C4

Air Cleaner, Extended Inspection, Transfer Conveyor, Automated Adjustable Filling with Pack Table

Apprx. Dimensions = 54' x 14' / 1 Sorter = 59' x 14' / 2 Sorters = 68' x 14'

8000 lbs per hour or less (with fresh berry destemmer)

Essential Destemming T Volumetric Adjustable Line D1

Air Cleaner, Fresh Berry Destemmer, Inspection, Automated Adjustable Filling with Pack Table

Apprx. Dimensions = 42' x 30' / 1 Sorter = 47' x 30' / 2 Sorters = 52' x 30'

Essential Destemming T Volumetric Adjustable EXT Line D2

Air Cleaner, Fresh Berry Destemmer, Extended Inspection, Automated Adjustable Filling with Pack Table

Apprx. Dimensions = 45' x 30' / 1 Sorter = 50' x 30' / 2 Sorters = 55' x 30'

Essential Destemming Straight Volumetric Adjustable Line D3

Air Cleaner, Fresh Berry Destemmer, Inspection, Transfer Conveyor, Automated Adjustable Filling with Pack Table

Apprx. Dimensions = 57' x 14' / 1 Sorter = 61' x 14' / 2 Sorters = 66' x 14'

Essential Destemming Straight Volumetric Adjustable EXT Line D4

Air Cleaner, Fresh Berry Destemmer Extended Inspection, Transfer Conveyor, Automated Adjustable Filling with Pack Table

Apprx. Dimensions = 61' x 14' / 1 Sorter = 66' x 14' / 2 Sorters = 71' x 14'



8000 lbs per hour or less (with adjustable berry sizer)

Essential Sizing T Volumetric Adjustable Line E1

Air Cleaner, Adjustable Sizer, Inspection, Automated Adjustable Filling with Pack Table

Apprx. Dimensions = 39' x 30' / 1 Sorter = 44' x 30' / 2 Sorters = 49' x 30'

Essential Sizing T Volumetric Adjustable EXT Line E2

Air Cleaner, Adjustable Sizer, Extended Inspection, Automated Adjustable Filling with Pack Table

Apprx. Dimensions = 42' x 30' / 1 Sorter = 47' x 30' / 2 Sorters = 52' x 30'

Essential Sizing Straight Volumetric Adjustable Line E3

Air Cleaner, Adjustable Sizer, Inspection, Transfer Conveyor, Automated Adjustable Filling with Pack Table

Apprx. Dimensions = 54' x 14' / 1 Sorter = 59' x 14' / 2 Sorters = 64' x 14'

Essential Sizing Straight Volumetric Adjustable EXT Line E4

Air Cleaner, Adjustable Sizer, Extended Inspection, Transfer Conveyor, Automated Adjustable Filling with Pack Table

Apprx. Dimensions = 58' x 14' / 1 Sorter = 63' x 14' / 2 Sorters = 68' x 14'

8000 lbs per hour or less (fresh berry destemmer & adjustable berry sizer)

Complete T Volumetric Adjustable Line F1

Air Cleaner, Fresh Berry Destemmer, Adjustable Sizer, Inspection, Automated Adjustable Filling with Pack Table

Apprx. Dimensions = 44' x 30' / 1 Sorter = 49' x 30' / 2 Sorters = 54' x 30'

Complete T Volumetric Adjustable EXT Line E2

Air Cleaner, Fresh Berry Destemmer Adjustable Sizer, Extended Inspection, Automated Adjustable Filling with Pack Table

Apprx. Dimensions = 47' x 30' / 1 Sorter = 52' x 30' / 2 Sorters = 57' x 30'

Complete Straight Volumetric Adjustable Line F3

Air Cleaner, Fresh Berry Destemmer, Adjustable Sizer, Inspection, Transfer Conveyor, Automated Adjustable Filling with Pack Table

Apprx. Dimensions = 59' x 14' / 1 Sorter = 64' x 14' / 2 Sorters = 69' x 14'

Complete Straight Volumetric Adjustable EXT Line F4

Air Cleaner, Fresh Berry Destemmer, Adjustable Sizer, Extended Inspection, Transfer Conveyor, Automated Adjustable Filling with Pack Table

Apprx. Dimensions = 63' x 14' / 1 Sorter = 68' x 14' / 2 Sorters = 73' x 14'



Videos, detailed descriptions, features, and equipment options
for each piece of machinery listed here can be found at

www.lakewoodpm.com

Contact us directly about any one of these lines at

Phone: 1-800-366-6705

Fax: 1-616-392-8977

Email: info@lakewoodpm.com

Basic Econo-Pack Line

4500 lbs or less per hour

Approximate Dimensions = 18' x 5'

Our 'Basic Econo-Pack' line consists of only 2 pieces of equipment, but will allow you to eliminate trash and small, unripe berries, manually inspect your fruit with up to 8 people, and fill your fruit into a wide variety of containers as fast as you can manually push containers through our filler.



Econo-Grade Sizer / Inspection



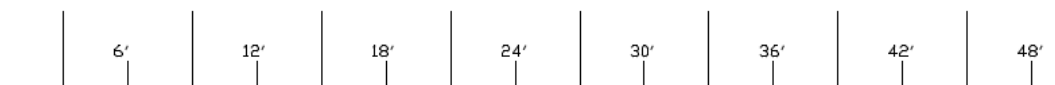
Push-Thru Volumetric Filler

1. Berries are dumped into the metering hopper above the sizing / trash eliminating rollers, where leaves and debris as well as small berries are removed from the main flow of the line and caught in a lug below the rollers

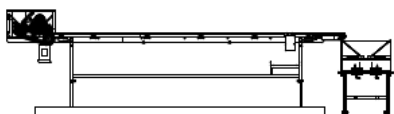
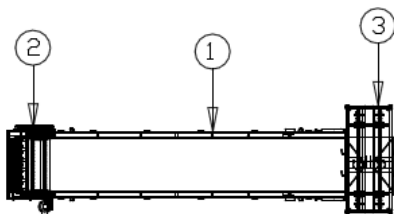
2. The berries that pass over the rollers and are an acceptable size will continue on to the 30" wide by 14' long flat rubber belt inspection conveyor where up to 8 people can manually inspect berries for flaws or pull remaining leaves or debris that the sizing section missed. Bad berries and debris pulled from the main line are placed in the trash lanes along each side of the conveyor, where they are conveyed into lugs below the conveyor for easy clean up.

3. Once inspected, the berries drop into the push-thru volumetric filler, where cups are manually placed onto the staging section and manually pushed underneath the hopper. Berries drop through to the cups and fill to the top as cups are pushed through. Once the containers are full and beyond the hopper, they are manually pulled from the exit end of the machine and closed by hand.

This filler features an adjustable container guide, allowing you to fit any size clamshell underneath the hopper section.



- 1. MODEL 10147 INSPECTION CONVEYOR
- 2. MODEL 73507 BUMP SIZER
- 3. MODEL 31050 PASS THRU FILLER



Important Notes:

Because this line has no elevating incline to reach the Push-Thru Filler's hopper height, an elevated platform may be required underneath the inspection conveyor to allow your grading personnel a comfortable height at which they can inspect your fruit.

Econo-Pack Line for Pints

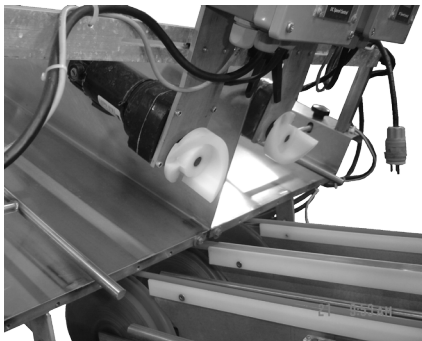
4500 lbs or less per hour

Approximate Dimensions = 18' x 19'

Our 'Econo-Pack for Pints' line consists of our Econo-Grade Sizing and Inspection System, a clamshell Wheel Denester, our Automated CS1 Pint Filler, and a Rotary Pack Table for case packing.



Econo-Grade Sizer / Inspection



Clamshell Wheel Denester



CS1 Clamshell Filler



Rotary Packing Table

1. Berries are dumped into the metering hopper above the sizing / trash eliminating rollers, where leaves and debris as well as small berries are removed from the main flow of the line and caught in a lug below the rollers

2. The berries that pass over the rollers and are an acceptable size will continue on to the 30" wide by 14' long flat rubber belt inspection conveyor where up to 8 people can manually inspect berries for flaws or pull remaining leaves or debris that the sizing section missed. Bad berries and debris pulled from the main line are placed in the trash lanes along each side of the conveyor, where they are conveyed into lugs below the conveyor for easy clean up.

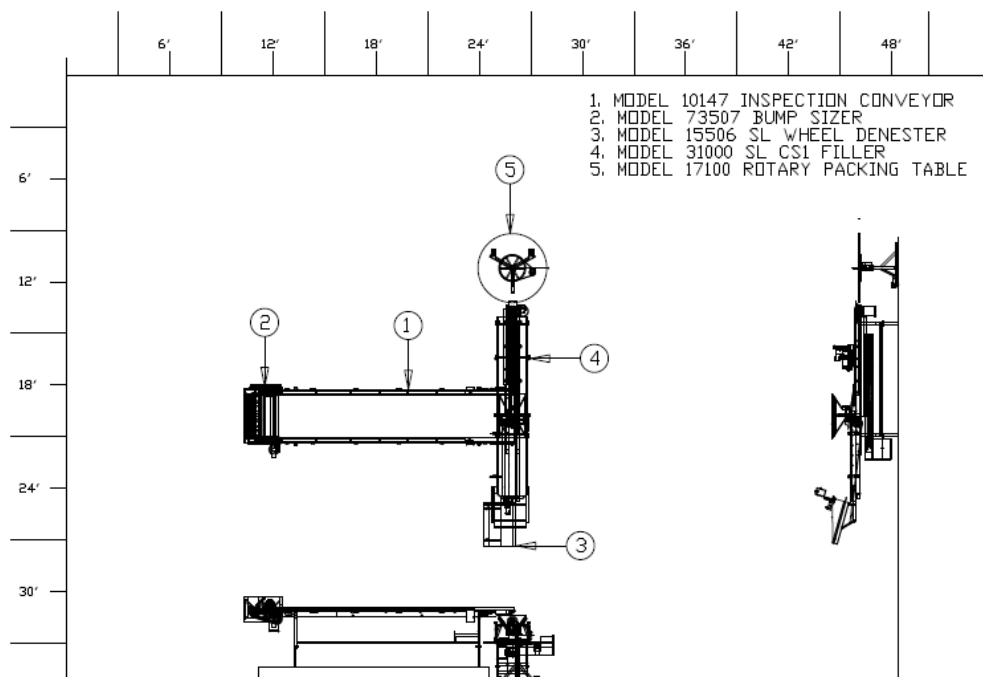
3. Once inspected, berries will continue onto the CS1 Volumetric Filler where a single lane Wheel Denester (dual lane Wheel Denester shown here) will distribute clamshells to the filler's infeed section.

4. Once clamshells are laid onto the CS1 Filler's container conveyor, they are volumetrically filled from the hopper above and then closed automatically by the powered paddle closer

5. After clamshells are filled, they are carried over to our Rotary Packing Table where workers can easily and comfortably case pack filled clamshells into boxes for shipping or cold storage.

Important Notes:

Because this line has no elevating incline to reach the CS1 Filler's hopper height, an elevated platform may be required underneath the inspection conveyor to allow your grading personnel a comfortable height at which they can inspect your fruit.



Econo-Pack Adjustable Line

4500 lbs or less per hour

Approximate Dimensions = 18' x 19'

Our 'Econo-Pack Adjustable Line' line gives you the flexibility you need to pack different sized clamshells while keeping your budget lower - this line is a best seller in South America.



Econo-Grade Sizer / Inspection



Clamshell Scissors Denester



Single Lane Adjustable Filler



Rotary Packing Table

1. Berries are dumped into the metering hopper above the sizing / trash eliminating rollers, where leaves and debris as well as small berries are removed from the main flow of the line and caught in a lug below the rollers

2. The berries that pass over the rollers and are an acceptable size will continue on to the 30" wide by 14' long flat rubber belt inspection conveyor where up to 8 people can manually inspect berries for flaws or pull remaining leaves or debris that the sizing section missed. Bad berries and debris pulled from the main line are placed in the trash lanes along each side of the conveyor, where they are conveyed into lugs below the conveyor for easy clean up.

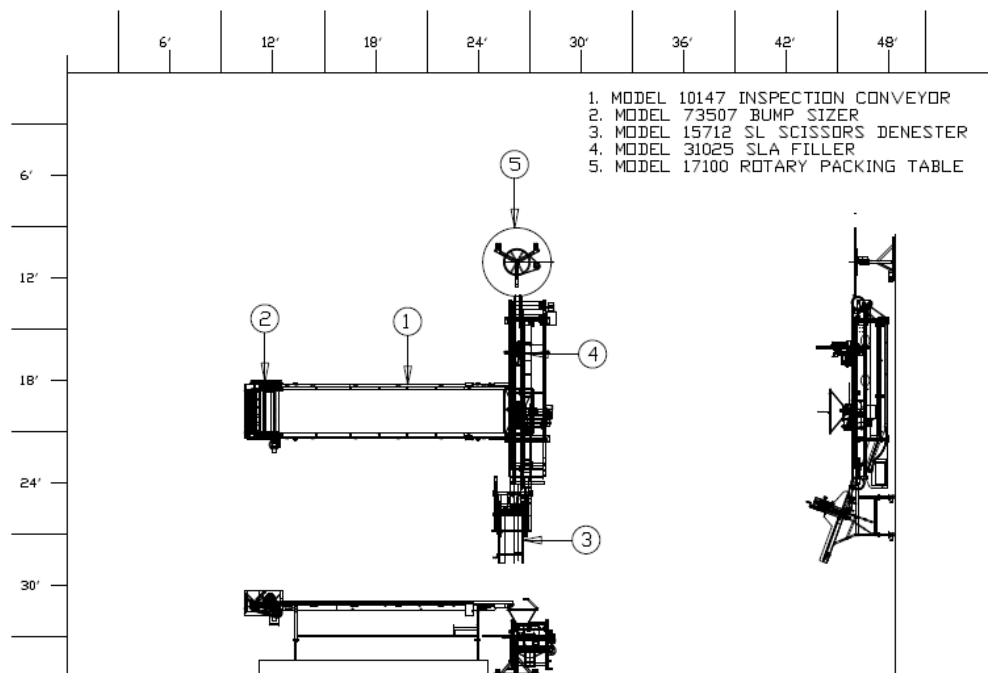
3. Once inspected, berries will continue onto the 'SLA' Filler where a single lane Scissors Denester will distribute clamshells to the filler's infeed section.

4. Once clamshells are laid onto the 'SLA's container conveyor, they are volumetrically filled from the hopper above and then closed automatically by the powered paddle closer

5. After clamshells are filled, they are carried over to our Rotary Packing Table where workers can easily and comfortably case pack filled clamshells into boxes for shipping or cold storage.

Important Notes:

Because this line has no elevating incline to reach the SLA's hopper height, an elevated platform may be required underneath the inspection conveyor to allow your grading personnel a comfortable height at which they can inspect your fruit.



Basic T Volumetric Line for Pints

6000 lbs or less per hour (pints)

Approximate Dimensions = 33' x 19' / 1 Sorter = 38' x 19' / 2 Sorters = 46' x 19'

Our 'Basic T Volumetric Line for Pints' introduces air cleaning into your line, which allows your line to run more volume of product than when using the Econo-Grade sizing system.



Easy-Flow Air Cleaner



Elevating Inspection Conveyor



Clamshell Wheel Denester



CS1 Clamshell Filler

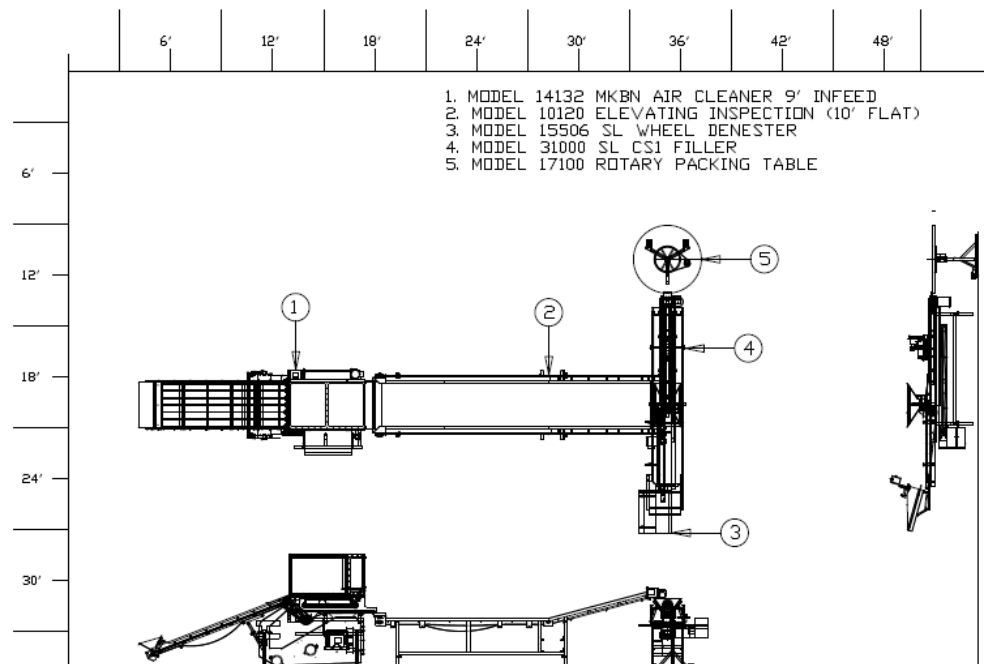
1. Berries are dumped into metering hopper on infeed conveyor of the Air Cleaner. The Air Cleaner removes dirt and debris from the main product flow.
2. Once through the Air Cleaner, berries are inspected on the Elevating Inspection Conveyor
3. Once inspected, berries will continue onto the CS1 Volumetric Filler where a single lane Wheel Denester (dual lane Wheel Denester shown here) will distribute clamshells to the filler's infeed section.
4. Once clamshells are laid onto the CS1 Filler's container conveyor, they are volumetrically filled from the hopper above and then closed automatically by the powered paddle closer
5. After clamshells are filled, they are carried over to our Rotary Packing Table where workers can easily and comfortably case pack filled clamshells into boxes for shipping or cold storage.



Rotary Packing Table

Important Notes:

This line comes standard with a 9' infeed conveyor on the Air Cleaner - If you are planning on using two sorters (a color sorter and soft sorter), the infeed conveyor on the air cleaner will need to be 12' long.



Basic T Volumetric EXT Line for Pints

6000 lbs or less per hour (pints)

Approximate Dimensions = 36' x 19' / 1 Sorter = 41' x 19' / 2 Sorters = 49' x 19'

Our 'Basic T Volumetric EXT Line for Pints' includes everything in the 'Basic T Volumetric Line' but uses an extended length Elevating Inspection Conveyor in place of the standard length Elevating Inspection Conveyor.



Easy-Flow Air Cleaner



Extended Length Elevating Inspection Conveyor



Clamshell Wheel Denester



CS1 Clamshell Filler

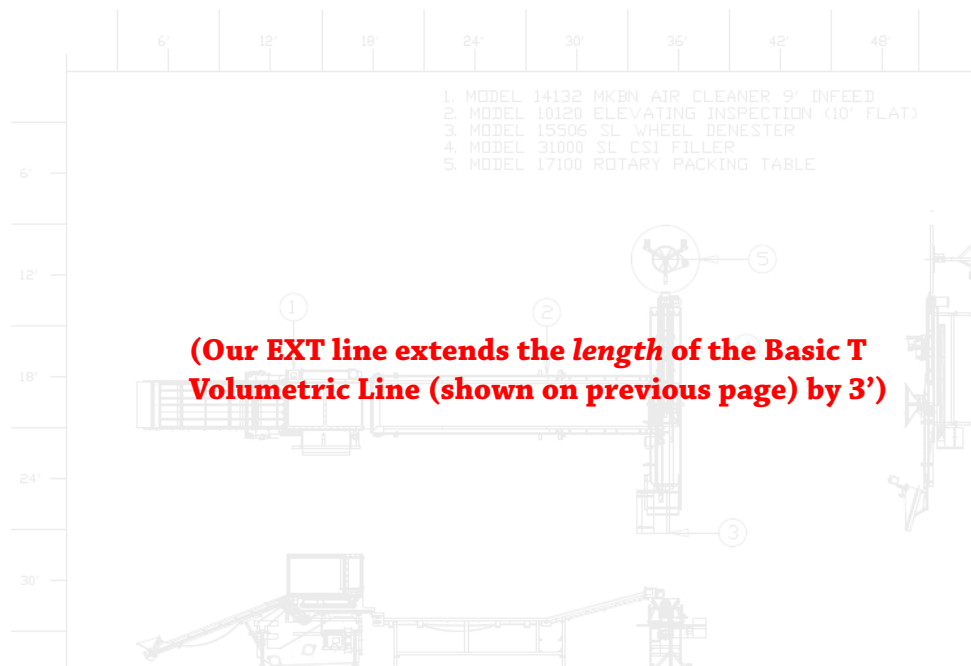
1. Berries are dumped into metering hopper on infeed conveyor of the Air Cleaner. The Air Cleaner removes dirt and debris from the main product flow.
2. Once through the Air Cleaner, berries are inspected on the Elevating Inspection Conveyor
3. Once inspected, berries will continue onto the CS1 Volumetric Filler where a single lane Wheel Denester (dual lane Wheel Denester shown here) will distribute clamshells to the filler's infeed section.
4. Once clamshells are laid onto the CS1 Filler's container conveyor, they are volumetrically filled from the hopper above and then closed automatically by the powered paddle closer
5. After clamshells are filled, they are carried over to our Rotary Packing Table where workers can easily and comfortably case pack filled clamshells into boxes for shipping or cold storage.



Rotary Packing Table

Important Notes:

This line comes standard with a 9' infeed conveyor on the Air Cleaner - If you are planning on using two sorters (a color sorter and soft sorter), the infeed conveyor on the air cleaner will need to be 12' long.



Basic Straight Volumetric Line for Pints

6000 lbs or less per hour (pints)

Approximate Dimensions = 38' x 14' / 1 Sorter = 43' x 14' / 2 Sorters = 51' x 14'

Our 'Basic Straight Volumetric Line for Pints' has all of the same basic features as the 'Basic T' line, only configures the equipment in a straight line to save space by using a flat inspection and elevated transfer conveyor.



Easy-Flow Air Cleaner



Flat Inspection Conveyor



Elevating Transfer Conveyor



Clamshell Wheel Denester

1. Berries are dumped into metering hopper on infeed conveyor of the Air Cleaner. The Air Cleaner removes dirt and debris from the main product flow.

2. Once through the Air Cleaner, berries are inspected on the Flat Inspection Conveyor

3. Once inspected, berries will be elevated by the transfer conveyor and continue onto the CS1 Volumetric Filler where a single lane Wheel Denester (dual lane Wheel Denester shown here) will distribute clamshells to the filler's infeed section.

4. Once clamshells are laid onto the CS1 Filler's container conveyor, they are volumetrically filled from the hopper above and then closed automatically by the powered paddle closer

5. After clamshells are filled, they are carried over to our Rotary Packing Table where workers can easily and comfortably case pack filled clamshells into boxes for shipping or cold storage.



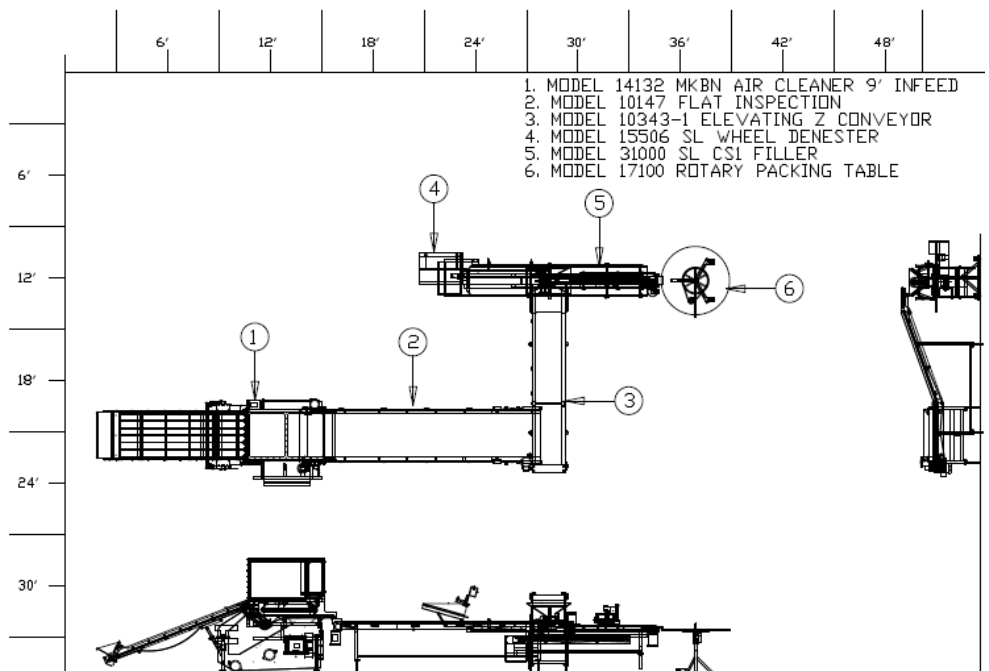
CS1 Clamshell Filler



Rotary Packing Table

Important Notes:

This line comes standard with a 9' infeed conveyor on the Air Cleaner - If you are planning on using two sorters (a color sorter and soft sorter), the infeed conveyor on the air cleaner will need to be 12' long.



Basic Straight Volumetric EXT Line for Pints

6000 lbs or less per hour (pints)

Approximate Dimensions = 42' x 14' / 1 Sorter = 47' x 14' / 2 Sorters = 55' x 14'

Our 'Basic Straight Volumetric EXT Line for Pints' has all of the same basic features as the 'Basic Straight' line, only configures the equipment in a straight line to save space by using a flat inspection and elevated transfer conveyor.



Easy-Flow Air Cleaner

1. Berries are dumped into metering hopper on infeed conveyor of the Air Cleaner. The Air Cleaner removes dirt and debris from the main product flow.

2. Once through the Air Cleaner, berries are inspected on the Flat Inspection Conveyor

3. Once inspected, berries will be elevated by the transfer conveyor and continue onto the CS1 Volumetric Filler where a single lane Wheel Denester (dual lane Wheel Denester shown here) will distribute clamshells to the filler's infeed section.



CS1 Clamshell Filler

4. Once clamshells are laid onto the CS1 Filler's container conveyor, they are volumetrically filled from the hopper above and then closed automatically by the powered paddle closer

5. After clamshells are filled, they are carried over to our Rotary Packing Table where workers can easily and comfortably case pack filled clamshells into boxes for shipping or cold storage.



Rotary Packing Table



Extended Length Flat Inspection Conveyor

Important Notes:

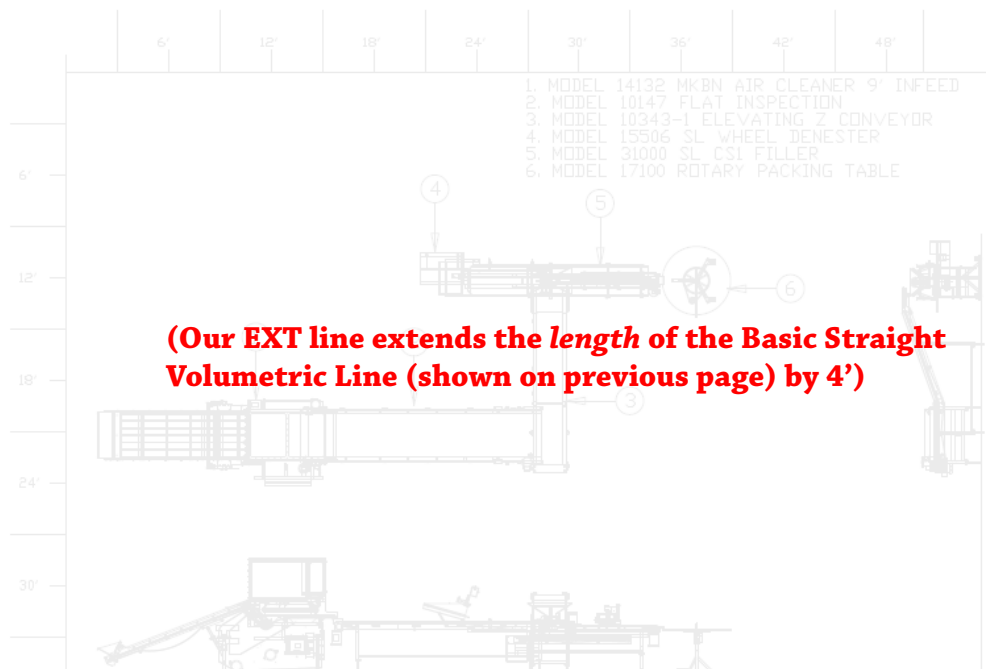
This line comes standard with a 9' infeed conveyor on the Air Cleaner - If you are planning on using two sorters (a color sorter and soft sorter), the infeed conveyor on the air cleaner will need to be 12' long.



Elevating Transfer Conveyor



Clamshell Wheel Denester



Basic T Volumetric Adjustable Line

8000 lbs or less per hour

Approximate Dimensions = 34' x 30' / 1 Sorter = 39' x 30' / 2 Sorters = 47' x 30'

Our 'Basic T Volumetric Adjustable Line' introduces the superior adjustability of our Single Lane Adjustable Filler (SLA) and our extremely popular Pack Off Table. This is our best selling Fresh Pack Line to date.



Easy-Flow Air Cleaner



Elevating Inspection Conveyor



Clamshell Scissors Denester



Single Lane Adjustable Filler

1. Berries are dumped into metering hopper on infeed conveyor of the Air Cleaner. The Air Cleaner removes dirt and debris from the main product flow.
2. Once through the Air Cleaner, berries are inspected on the Elevating Inspection Conveyor
3. Once inspected, berries will continue onto the SLA Volumetric Filler where a single lane Scissors Denester will distribute clamshells to the filler's infeed section.

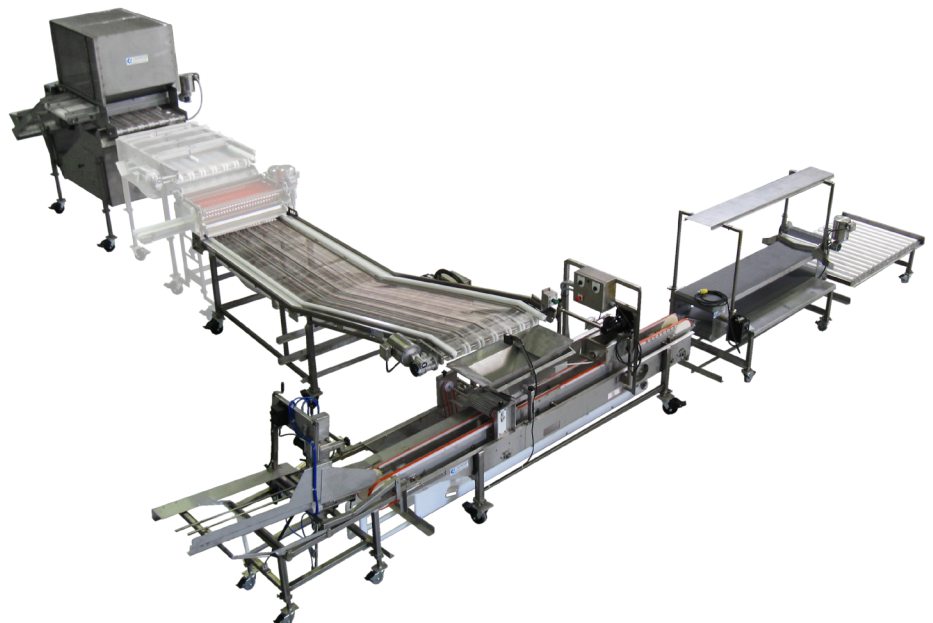


6 Person Pack-off Conveyor

4. Once clamshells are laid onto the SLA Filler's container conveyor, they are volumetrically filled from the hopper above and then closed automatically by the powered paddle closer
5. After clamshells are filled, they are carried over to our 6 Person Pack-off Conveyor where workers case pack directly from the top deck conveyor into cases resting on the shelf below, which once full, are simply pushed to the lower conveyor and conveyed off to shipping. Top deck (see picture above) holds empty cases for easy access.

Important Notes:

This line comes standard with a 9' infeed conveyor on the Air Cleaner - If you are planning on using two sorters (a color sorter and soft sorter), the infeed conveyor on the air cleaner will need to be 12' long.



Please note that the Sizer and Destemmer shown in layout above are not included in this line package

Basic T Volumetric Adjustable EXT Line

8000 lbs or less per hour

Approximate Dimensions = 37' x 30' / 1 Sorter = 42' x 30' / 2 Sorters = 50' x 30'

Our 'Basic T Volumetric Adjustable EXT Line' introduces the superior adjustability of our Single Lane Adjustable Filler (SLA) and our extremely popular Pack Off Table along with an extended length Inspection Conveyor.



Easy-Flow Air Cleaner



Extended Length Elevating Inspection Conveyor



Clamshell Scissors Denester



Single Lane Adjustable Filler

1. Berries are dumped into metering hopper on infeed conveyor of the Air Cleaner. The Air Cleaner removes dirt and debris from the main product flow.
2. Once through the Air Cleaner, berries are inspected on the Elevating Inspection Conveyor
3. Once inspected, berries will continue onto the SLA Volumetric Filler where a single lane Scissors Denester will distribute clamshells to the filler's infeed section.

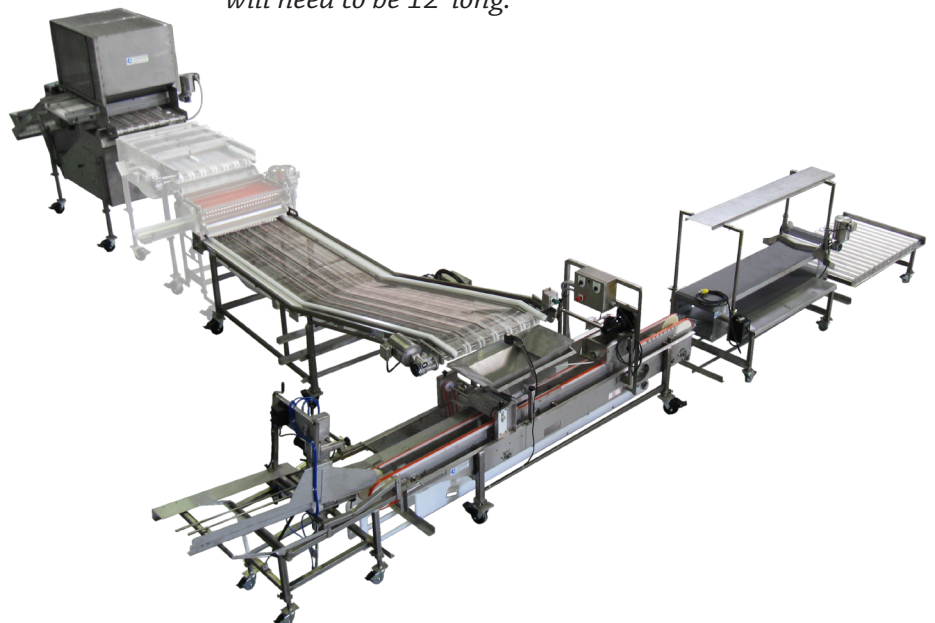


6 Person Pack-off Conveyor

4. Once clamshells are laid onto the SLA Filler's container conveyor, they are volumetrically filled from the hopper above and then closed automatically by the powered paddle closer
5. After clamshells are filled, they are carried over to our 6 Person Pack-off Conveyor where workers case pack directly from the top deck conveyor into cases resting on the shelf below, which once full, are simply pushed to the lower conveyor and conveyed off to shipping. Top deck (see picture above) holds empty cases for easy access.

Important Notes:

This line comes standard with a 9' infeed conveyor on the Air Cleaner - If you are planning on using two sorters (a color sorter and soft sorter), the infeed conveyor on the air cleaner will need to be 12' long.



Please note that the Sizer and Destemmer shown in layout above are not included in this line package

Basic Straight Volumetric Adjustable Line

8000 lbs or less per hour

Approximate Dimensions = 50' x 14' / 1 Sorter = 55' x 14' / 2 Sorters = 63' x 14'

Our 'Basic Straight Volumetric Adjustable Line' has all of the same basic features as the 'Basic T' line, only configures the equipment in a straight line to save space by using a flat inspection and elevated transfer conveyor.



Easy-Flow Air Cleaner



Flat Inspection Conveyor



Elevating Transfer Conveyor



Clamshell Scissors Denester

1. Berries are dumped into metering hopper on infeed conveyor of the Air Cleaner. The Air Cleaner removes dirt and debris from the main product flow.

2. Once through the Air Cleaner, berries are inspected on the Flat Inspection Conveyor

3. Once inspected, berries will be elevated by the transfer conveyor and continue onto the SLA Volumetric Filler where a single lane Scissors Denester will distribute clamshells to the filler's infeed section.

4. Once clamshells are laid onto the SLA Filler's container conveyor, they are volumetrically filled from the hopper above and then closed automatically by the powered paddle closer

5. After clamshells are filled, they are carried over to our 6 Person Pack-off Conveyor where workers case pack directly from the top deck conveyor into cases resting on the shelf below, which once full, are simply pushed to the lower conveyor and conveyed off to shipping. Top deck (see picture above) holds empty cases for easy access.



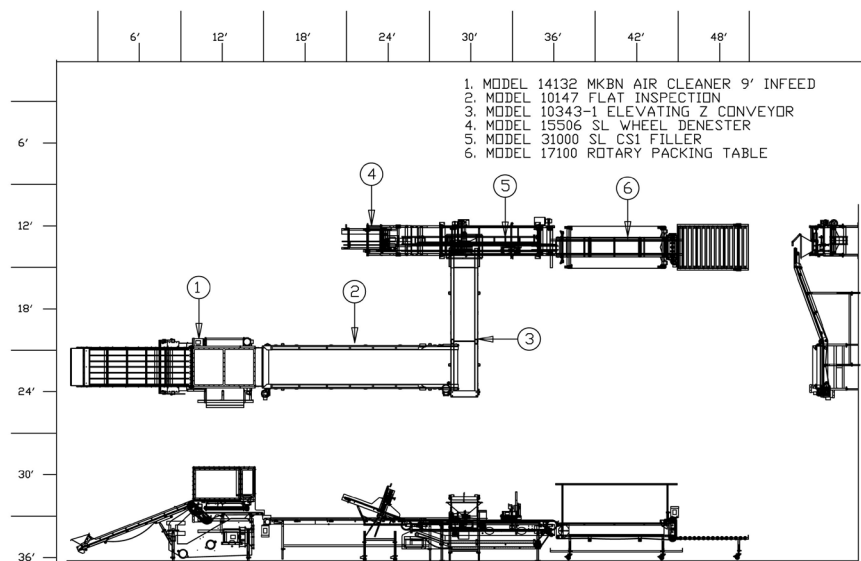
Single Lane Adjustable Filler



Rotary Packing Table

Important Notes:

This line comes standard with a 9' infeed conveyor on the Air Cleaner - If you are planning on using two sorters (a color sorter and soft sorter), the infeed conveyor on the air cleaner will need to be 12' long.



Basic Straight Volumetric Adjustable EXT Line

8000 lbs or less per hour

Approximate Dimensions = 54' x 14' / 1 Sorter = 59' x 14' / 2 Sorters = 67' x 14'

Our 'Basic Straight Volumetric Adjustable Line' has all of the same basic features as the 'Basic Straight' line, only configures the equipment in a straight line to save space by using a flat inspection and elevated transfer conveyor.



Easy-Flow Air Cleaner



Extended Length Elevating Inspection Conveyor



Elevating Transfer Conveyor



Clamshell Scissors Denester

1. Berries are dumped into metering hopper on infeed conveyor of the Air Cleaner. The Air Cleaner removes dirt and debris from the main product flow.

2. Once through the Air Cleaner, berries are inspected on the Flat Inspection Conveyor

3. Once inspected, berries will be elevated by the transfer conveyor and continue onto the SLA Volumetric Filler where a single lane Scissors Denester will distribute clamshells to the filler's infeed section.

4. Once clamshells are laid onto the SLA Filler's container conveyor, they are volumetrically filled from the hopper above and then closed automatically by the powered paddle closer

5. After clamshells are filled, they are carried over to our 6 Person Pack-off Conveyor where workers case pack directly from the top deck conveyor into cases resting on the shelf below, which once full, are simply pushed to the lower conveyor and conveyed off to shipping. Top deck (see picture above) holds empty cases for easy access.



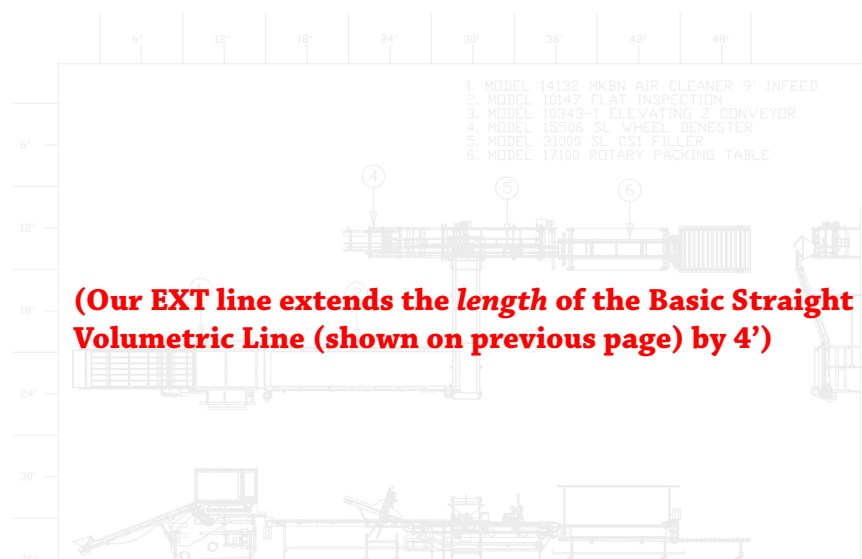
Single Lane Adjustable Filler



Rotary Packing Table

Important Notes:

This line comes standard with a 9' infeed conveyor on the Air Cleaner - If you are planning on using two sorters (a color sorter and soft sorter), the infeed conveyor on the air cleaner will need to be 12' long.



Essential Destemming T Volumetric Adjustable Line

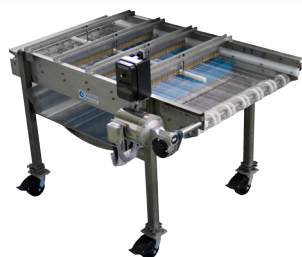
8000 lbs or less per hour

Approximate Dimensions = 42' x 30' / 1 Sorter = 47' x 30' / 2 Sorters = 52' x 30'

The Essential Destemming line introduces our Fresh Berry Destemmer which gently and effectively removes stems from your fresh berries.



Easy-Flow Air Cleaner



Fresh Berry Destemmer



Elevating Inspection Conveyor



Clamshell Scissors Denester

1. Berries are run through the Easy-Flow Air Cleaner.

2. Once through the Air Cleaner stems are gently pulled from the berries by the fresh-berry destemmer. As berries continue on down the line stems are collected beneath the destemmer in a collection pan.

3. Once through the Destemmer, berries are inspected on the Elevating Inspection Conveyor.

4. Once inspected, berries will continue onto the SLA Volumetric Filler where a single lane Scissors Denester will distribute clamshells to the filler's infeed section.

5. Clamshells are filled volumetrically by the SLA Filler.

6. After clamshells are filled, they are case packed from the dual level pack-off conveyor.



Single Lane Adjustable Filler



6 Person Pack-off Conveyor

Important Notes:

This line comes standard with a 12' infeed conveyor on the Air Cleaner



Please note that the Sizer shown in layout above is not included in this line package

Essential Destemming T Volumetric Adjustable EXT Line

8000 lbs or less per hour

Approximate Dimensions = 45' x 30' / 1 Sorter = 50' x 30' / 2 Sorters = 55' x 30'

The Essential Destemming line introduces our Fresh Berry Destemmer which gently and effectively removes stems from your fresh berries.



Easy-Flow Air Cleaner



Fresh Berry Destemmer



Ext. Length Elevating Inspection Conveyor



Clamshell Scissors Denester

1. Berries are run through the Easy-Flow Air Cleaner.
2. Once through the Air Cleaner stems are gently pulled from the berries by the fresh-berry destemmer. As berries continue on down the line stems are collected beneath the destemmer in a collection pan.
3. Once through the Destemmer, berries are inspected on the Elevating Inspection Conveyor.
4. Once inspected, berries will continue onto the SLA Volumetric Filler where a single lane Scissors Denester will distribute clamshells to the filler's infeed section.
5. Clamshells are filled volumetrically by the SLA Filler.
6. After clamshells are filled, they are case packed from the dual level pack-off conveyor.



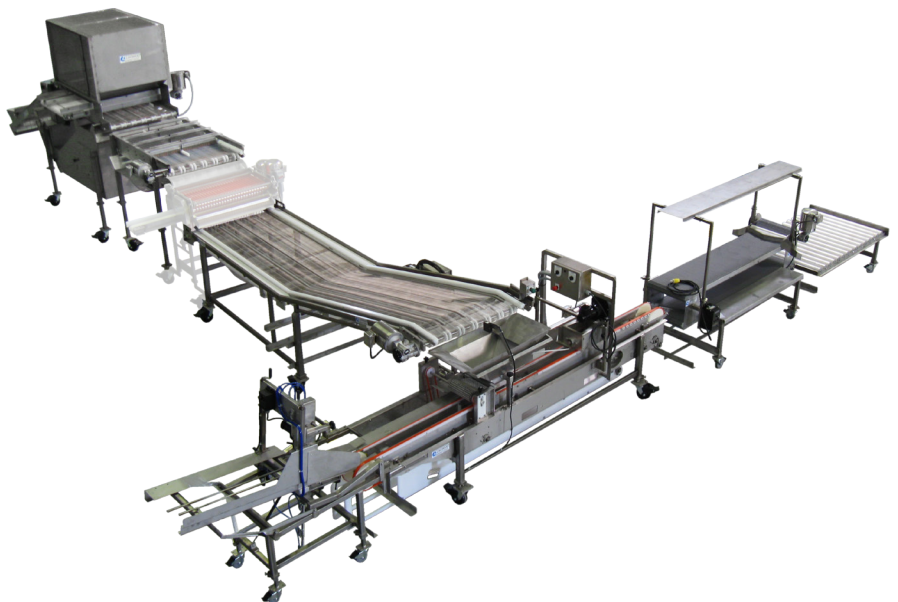
Single Lane Adjustable Filler



6 Person Pack-off Conveyor

Important Notes:

This line comes standard with a 12' infeed conveyor on the Air Cleaner



Please note that the Sizer shown in layout above is not included in this line package

Essential Destemming Straight Volumetric Adjustable Line

8000 lbs or less per hour

Approximate Dimensions = 57' x 14' / 1 Sorter = 61' x 14' / 2 Sorters = 66' x 14'

The Essential Destemming line introduces our Fresh Berry Destemmer which gently and effectively removes stems from your fresh berries.



Easy-Flow Air Cleaner



Fresh Berry Destemmer



Flat Inspection Conveyor



Elevating Transfer Conveyor

1. Berries are run through the Easy-Flow Air Cleaner.

2. Once through the Air Cleaner stems are gently pulled from the berries by the fresh-berry destemmer. As berries continue on down the line stems are collected beneath the destemmer in a collection pan.

3. Once through the Destemmer, berries are inspected on the Elevating Inspection Conveyor and transferred over to the filler.

4. Berries will continue onto the SLA Volumetric Filler where a single lane Scissors Denester will distribute clamshells to the filler's infeed section.

5. Clamshells are filled volumetrically by the SLA Filler.

6. After clamshells are filled, they are case packed from the dual level pack-off conveyor.

Important Notes:

This line comes standard with a 12' infeed conveyor on the Air Cleaner



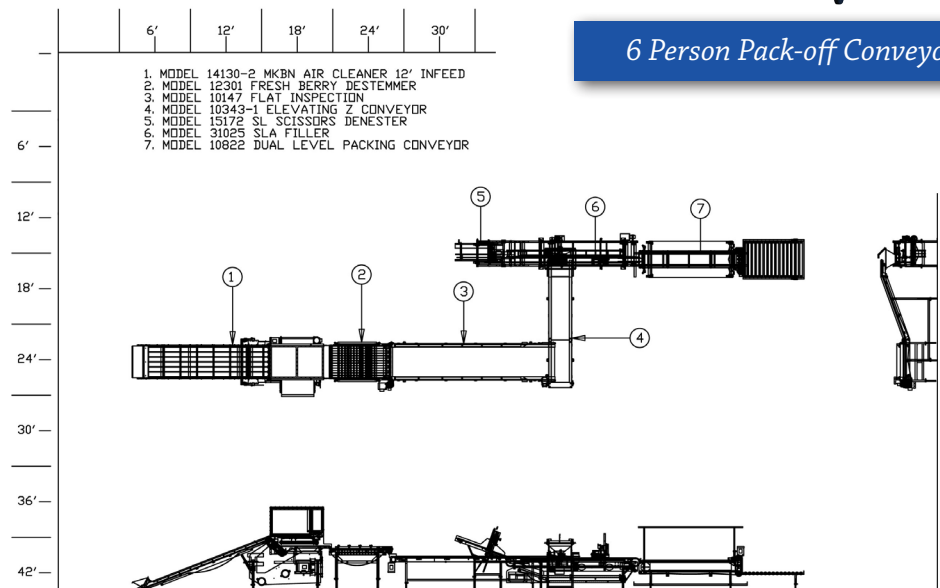
Clamshell Scissors Denester



Single Lane Adjustable Filler



6 Person Pack-off Conveyor



Essential Destemming Straight Volumetric Adjustable EXT Line

8000 lbs or less per hour

Approximate Dimensions = 61' x 14' / 1 Sorter = 66' x 14' / 2 Sorters = 71' x 14'

The Essential Destemming line introduces our Fresh Berry Destemmer which gently and effectively removes stems from your fresh berries.



Easy-Flow Air Cleaner



Fresh Berry Destemmer



Extended Length Elevating Inspection Conveyor



Elevating Transfer Conveyor

1. Berries are run through the Easy-Flow Air Cleaner.

2. Once through the Air Cleaner stems are gently pulled from the berries by the fresh-berry destemmer. As berries continue on down the line stems are collected beneath the destemmer in a collection pan.

3. Once through the Destemmer, berries are inspected on the Elevating Inspection Conveyor and transferred over to the filler.

4. Berries will continue onto the SLA Volumetric Filler where a single lane Scissors Denester will distribute clamshells to the filler's infeed section.

5. Clamshells are filled volumetrically by the SLA Filler.

6. After clamshells are filled, they are case packed from the dual level pack-off conveyor.

Important Notes:

This line comes standard with a 12' infeed conveyor on the Air Cleaner



Clamshell Scissors Denester



Single Lane Adjustable Filler



6 Person Pack-off Conveyor

	6'	12'	18'	24'	30'
1. MODEL 14130-2 MKBN AIR CLEANER 12" INFEED					
2. MODEL 12901 FRESH BERRY DESTEMMER					
3. MODEL 10147 FLAT INSPECTION					
4. MODEL 10343-1 ELEVATING Z-CONVEYOR					
5. MODEL 10172 SL SCISSORS DENESTER					
6. MODEL 31025 SLA FILLER					
7. MODEL 10822 DUAL LEVEL PACKING CONVEYOR					

(Our EXT line extends the length of the Essential Destemming Straight Volumetric Line (shown on previous page) by 4')

Essential Sizing T Volumetric Adjustable Line

8000 lbs or less per hour

Approximate Dimensions = 39' x 30' / 1 Sorter = 44' x 30' / 2 Sorters = 49' x 30'

The Essential Sizing line introduces our Adjustable Belt Sizer which allows for adjustable and accurate sizing of your berries



Easy-Flow Air Cleaner



Adjustable Belt Sizer



Elevating Inspection Conveyor



Clamshell Scissors Denester

1. Berries are run through the Easy-Flow Air Cleaner.

2. Once through the Air Cleaner berries are sized into 2 separate divisions, small berries are dropped through the sizing belts and large berries carry over the sizer and onto the inspection conveyor.

3. Once through the Sizer, berries are inspected on the Elevating Inspection Conveyor.

4. Once inspected, berries will continue onto the SLA Volumetric Filler where a single lane Scissors Denester will distribute clamshells to the filler's infeed section.

5. Clamshells are filled volumetrically by the SLA Filler.

6. After clamshells are filled, they are case packed from the dual level pack-off conveyor.



Single Lane Adjustable Filler



6 Person Pack-off Conveyor

Important Notes:

This line comes standard with a 12' infeed conveyor on the Air Cleaner



Please note that the Destemmer shown in layout above is not included in this line package

Essential Sizing T Volumetric Adjustable EXT Line

8000 lbs or less per hour

Approximate Dimensions = 42' x 30' / 1 Sorter = 47' x 30' / 2 Sorters = 52' x 30'

The Essential Sizing line introduces our Adjustable Belt Sizer which allows for adjustable and accurate sizing of your berries



Easy-Flow Air Cleaner



Adjustable Belt Sizer



Ext. Length Elevating Inspection Conveyor



Clamshell Scissors Denester

1. Berries are run through the Easy-Flow Air Cleaner.

2. Once through the Air Cleaner berries are sized into 2 separate divisions, small berries are dropped through the sizing belts and large berries carry over the sizer and onto the inspection conveyor.

3. Once through the Sizer, berries are inspected on the Elevating Inspection Conveyor.

4. Once inspected, berries will continue onto the SLA Volumetric Filler where a single lane Scissors Denester will distribute clamshells to the filler's infeed section.

5. Clamshells are filled volumetrically by the SLA Filler.

6. After clamshells are filled, they are case packed from the dual level pack-off conveyor.



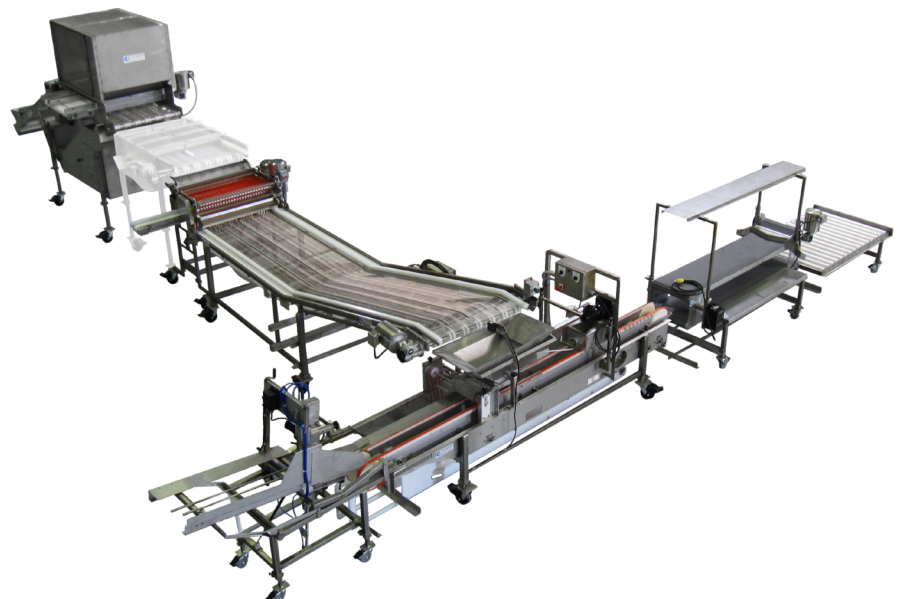
Single Lane Adjustable Filler



6 Person Pack-off Conveyor

Important Notes:

This line comes standard with a 12' infeed conveyor on the Air Cleaner



Please note that the Destemmer shown in layout above is not included in this line package

Essential Sizing Straight Volumetric Adjustable Line

8000 lbs or less per hour

Approximate Dimensions = 54' x 14' / 1 Sorter = 59' x 14' / 2 Sorters = 64' x 14'

The Essential Sizing line introduces our Adjustable Belt Sizer which allows for adjustable and accurate sizing of your berries



Easy-Flow Air Cleaner



Adjustable Belt Sizer



Flat Inspection Conveyor



Elevating Transfer Conveyor

1. Berries are run through the Easy-Flow Air Cleaner.

2. Once through the Air Cleaner berries are sized into 2 separate divisions, small berries are dropped through the sizing belts and large berries carry over the sizer and onto the inspection conveyor.

3. Once through the Sizer, berries are inspected on the Elevating Inspection Conveyor and transferred over to the filler.

4. Berries will continue onto the SLA Volumetric Filler where a single lane Scissors Denester will distribute clamshells to the filler's infeed section.

5. Clamshells are filled volumetrically by the SLA Filler.

6. After clamshells are filled, they are case packed from the dual level pack-off conveyor.

Important Notes:

This line comes standard with a 12' infeed conveyor on the Air Cleaner



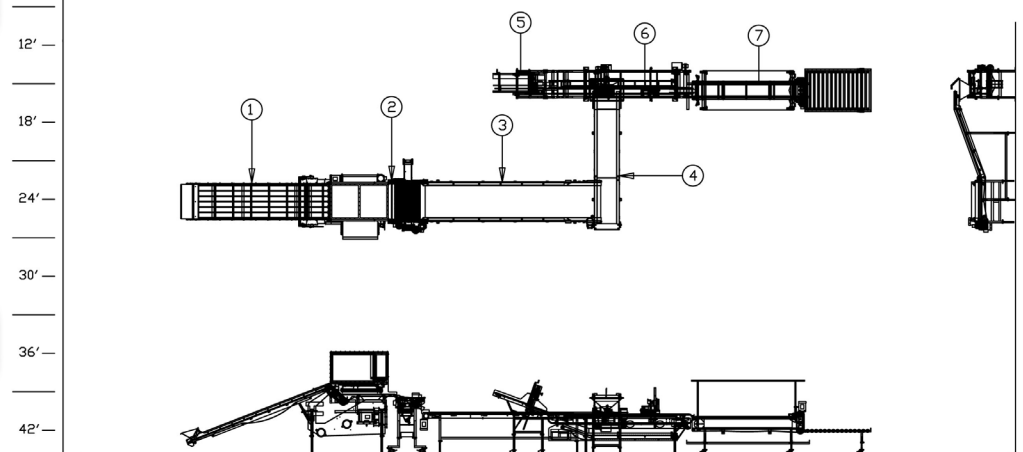
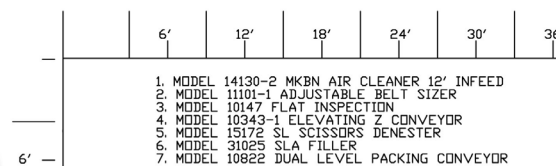
Clamshell Scissors Denester



Single Lane Adjustable Filler



6 Person Pack-off Conveyor



Essential Sizing Straight Volumetric Adjustable EXT Line

8000 lbs or less per hour

Approximate Dimensions = 58' x 14' / 1 Sorter = 63' x 14' / 2 Sorters = 68' x 14'

The Essential Sizing line introduces our Adjustable Belt Sizer which allows for adjustable and accurate sizing of your berries



Easy-Flow Air Cleaner



Adjustable Belt Sizer



Extended Length Elevating Inspection Conveyor



Elevating Transfer Conveyor

1. Berries are run through the Easy-Flow Air Cleaner.
2. Once through the Air Cleaner berries are sized into 2 separate divisions, small berries are dropped through the sizing belts and large berries carry over the sizer and onto the inspection conveyor.
3. Once through the Sizer, berries are inspected on the Elevating Inspection Conveyor and transferred over to the filler.
4. Berries will continue onto the SLA Volumetric Filler where a single lane Scissors Denester will distribute clamshells to the filler's infeed section.
5. Clamshells are filled volumetrically by the SLA Filler.
6. After clamshells are filled, they are case packed from the dual level pack-off conveyor.

Important Notes:

This line comes standard with a 12' infeed conveyor on the Air Cleaner



Clamshell Scissors Denester



Single Lane Adjustable Filler



6 Person Pack-off Conveyor

1. MODEL 14130-2 MCBN AIR CLEANER 12' INFEED
2. MODEL 11101-1 ADJUSTABLE BELT SIZER
3. MODEL 10147 FLAT INSPECTION
4. MODEL 10343-1 ELEVATING Z CONVEYOR
5. MODEL 15172 SL SCISSORS DENESTER
6. MODEL 31025 SLA FILLER
7. MODEL 10822 DUAL LEVEL PACKING CONVEYOR

(Our EXT line extends the length of the Essential Sizing Straight Volumetric Line (shown on previous page) by 4')

Complete T Volumetric Adjustable Line

8000 lbs or less per hour

Approximate Dimensions = 44' x 30' / 1 Sorter = 49' x 30' / 2 Sorters = 54' x 30'

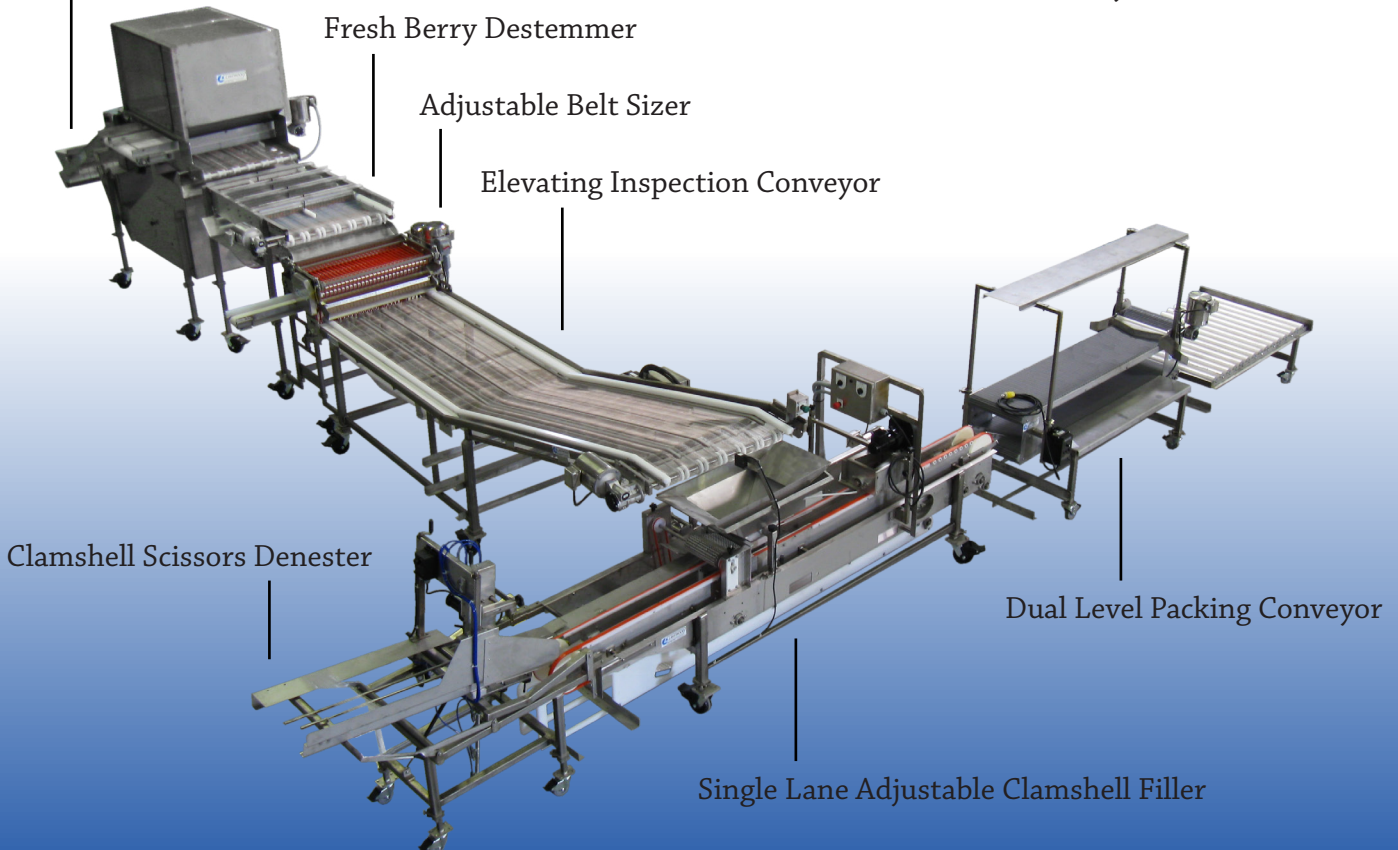
The Complete line includes both the Fresh Berry Destemmer and the Adjustable Sizer along with the rest of our best selling fresh pack equipment.

1. Berries are run through the Easy-Flow Air Cleaner.
2. After passing through the Air Cleaner, berries are gently de-stemmed by the Fresh Berry Destemmer
2. Next, berries are sized into 2 separate divisions, small berries are dropped through the sizing belts and large berries carry over the sizer and onto the inspection conveyor.
3. Once through the Sizer, berries are inspected on the Elevating Inspection Conveyor.
4. Once inspected, berries will continue onto the SLA Volumetric Filler where a single lane Scissors Denester will distribute clamshells to the filler's infeed section.
5. Clamshells are filled volumetrically by the SLA Filler.
6. After clamshells are filled, they are case packed from the dual level pack-off conveyor.

Easy-Flow Air Cleaner

Important Notes:

This line comes standard with a 12' infeed conveyor on the Air Cleaner



Complete T Volumetric Adjustable EXT Line

8000 lbs or less per hour

Approximate Dimensions = 47' x 30' / 1 Sorter = 52' x 30' / 2 Sorters = 57' x 30'

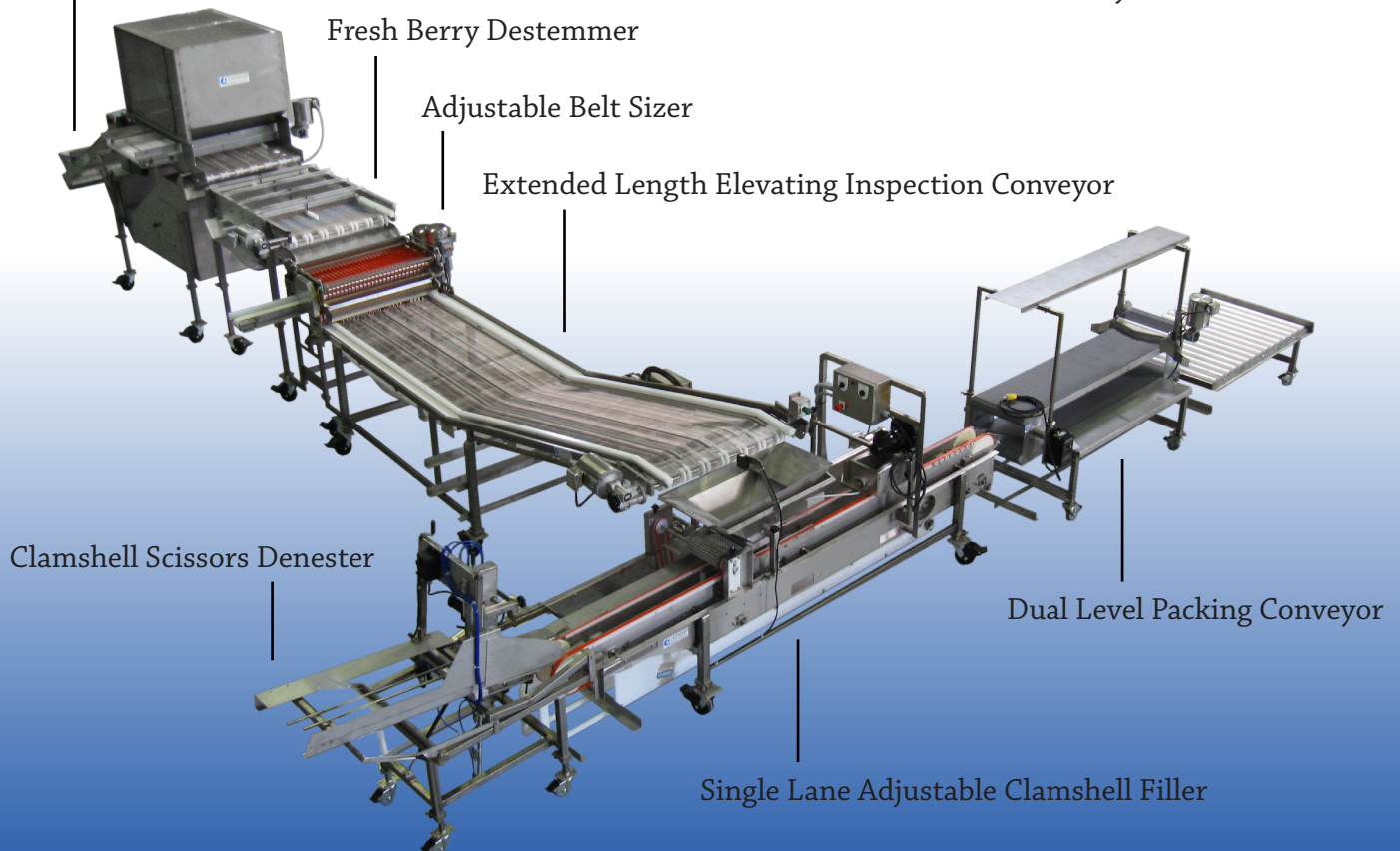
The Complete line includes both the Fresh Berry Destemmer and the Adjustable Sizer along with the rest of our best selling fresh pack equipment.

1. Berries are run through the Easy-Flow Air Cleaner.
2. After passing through the Air Cleaner, berries are gently de-stemmed by the Fresh Berry Destemmer
2. Next, berries are sized into 2 separate divisions, small berries are dropped through the sizing belts and large berries carry over the sizer and onto the inspection conveyor.
3. Once through the Sizer, berries are inspected on the Elevating Inspection Conveyor.
4. Once inspected, berries will continue onto the SLA Volumetric Filler where a single lane Scissors Denester will distribute clamshells to the filler's infeed section.
5. Clamshells are filled volumetrically by the SLA Filler.
6. After clamshells are filled, they are case packed from the dual level pack-off conveyor.

Easy-Flow Air Cleaner

Important Notes:

This line comes standard with a 12' infeed conveyor on the Air Cleaner



Complete Straight Volumetric Adjustable Line

8000 lbs or less per hour

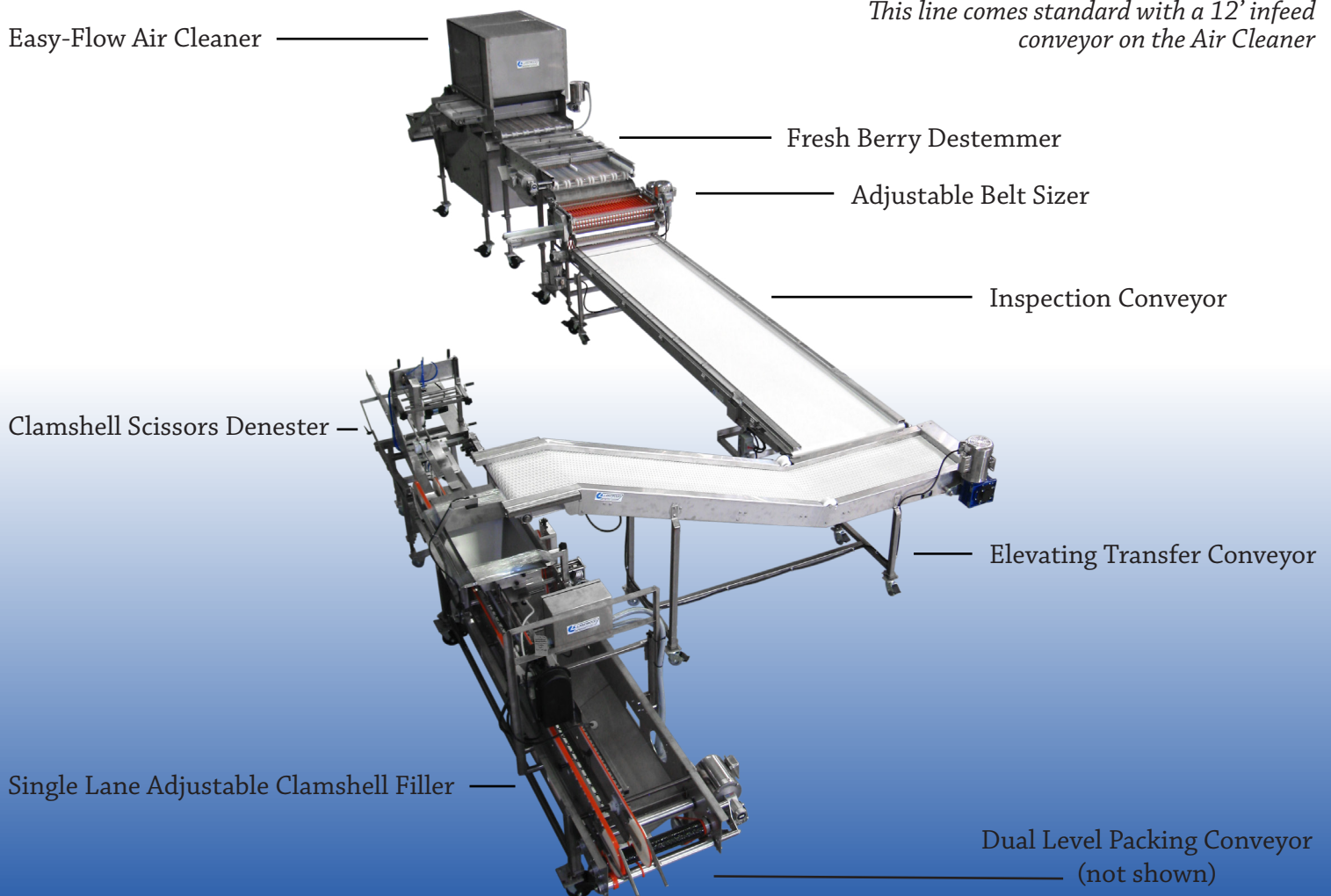
Approximate Dimensions = 59' x 14' / 1 Sorter = 64' x 14' / 2 Sorters = 69' x 14'

The Complete line includes both the Fresh Berry Destemmer and the Adjustable Sizer along with the rest of our best selling fresh pack equipment.

1. Berries are run through the Easy-Flow Air Cleaner.
2. After passing through the Air Cleaner, berries are gently de-stemmed by the Fresh Berry Destemmer
2. Next, berries are sized into 2 separate divisions, small berries are dropped through the sizing belts and large berries carry over the sizer and onto the inspection conveyor.
3. Once through the Sizer, berries are inspected on the Inspection Conveyor and transferred over to the filler.
4. Berries continue onto the SLA Volumetric Filler where a single lane Scissors Denester will distribute clamshells to the filler's infeed section.
5. Clamshells are filled volumetrically by the SLA Filler.
6. After clamshells are filled, they are case packed from the dual level pack-off conveyor.

Important Notes:

This line comes standard with a 12' infeed conveyor on the Air Cleaner



Complete Straight Volumetric Adjustable EXT Line

8000 lbs or less per hour

Approximate Dimensions = 63' x 14' / 1 Sorter = 68' x 14' / 2 Sorters = 73' x 14'

The Complete line includes both the Fresh Berry Destemmer and the Adjustable Sizer along with the rest of our best selling fresh pack equipment.

1. Berries are run through the Easy-Flow Air Cleaner.
2. After passing through the Air Cleaner, berries are gently de-stemmed by the Fresh Berry Destemmer
2. Next, berries are sized into 2 separate divisions, small berries are dropped through the sizing belts and large berries carry over the sizer and onto the inspection conveyor.
3. Once through the Sizer, berries are inspected on the Inspection Conveyor and transferred over to the filler.
4. Berries continue onto the SLA Volumetric Filler where a single lane Scissors Denester will distribute clamshells to the filler's infeed section.
5. Clamshells are filled volumetrically by the SLA Filler.
6. After clamshells are filled, they are case packed from the dual level pack-off conveyor.

Important Notes:

This line comes standard with a 12' infeed conveyor on the Air Cleaner

